

visualite

Visualise your world



Lighting Solutions

Contact us:

 your-visualite.co.uk

 0844 880 3656*

 hello@your-visualite.co.uk

 [@hellovisualite](https://twitter.com/hellovisualite)

*Calls to 0844 numbers will be charged at 7p per minute from a Standard BT Line, calls from mobiles and other networks may vary.



Introduction

What is Visualite?

...Simply revolutionary. Powered by spectacular edge light technology and supplied with a vast array of stunning visuals, our new range of Visualite systems create an amazing lighting effect and ambience, incorporating the light source and bespoke image into one.

As well as choosing from any of our beautiful high definition images we can also incorporate your own images and artwork to provide the personalised product which you desire. Feel the warm embrace of daylight shining down from the ceiling with the magnificent blue-sky scene, or gaze across iconic landscapes no matter where you are. Years of continuous development now enable us to be ahead of the game, providing exciting simulations fit for any scenario.

The Visualite system can provide a pleasant and powerful impact in any of these environments:

- Hospitals and other medical environments
- Retail and leisure
- Car showrooms
- Commercial offices
- Education
- Sport stadiums
- Basements
- Boardrooms
- Homes

The list is endless, the only limit is your imagination.

What makes Visualite unique?

- Unlike anything on the market, the quality of printing on our products is exceptional. Using the VTEC system, we process in the full colour spectrum, rendering a superb image, with no compromise on the quality
- Non-ferrous Visualite systems available for medical environments
- Built with a tough outer protective coating, the Visualite system offers a fully wipeable surface for ease of maintenance and product longevity
- Personalised service: Our dedicated design team will assist you in selecting your image

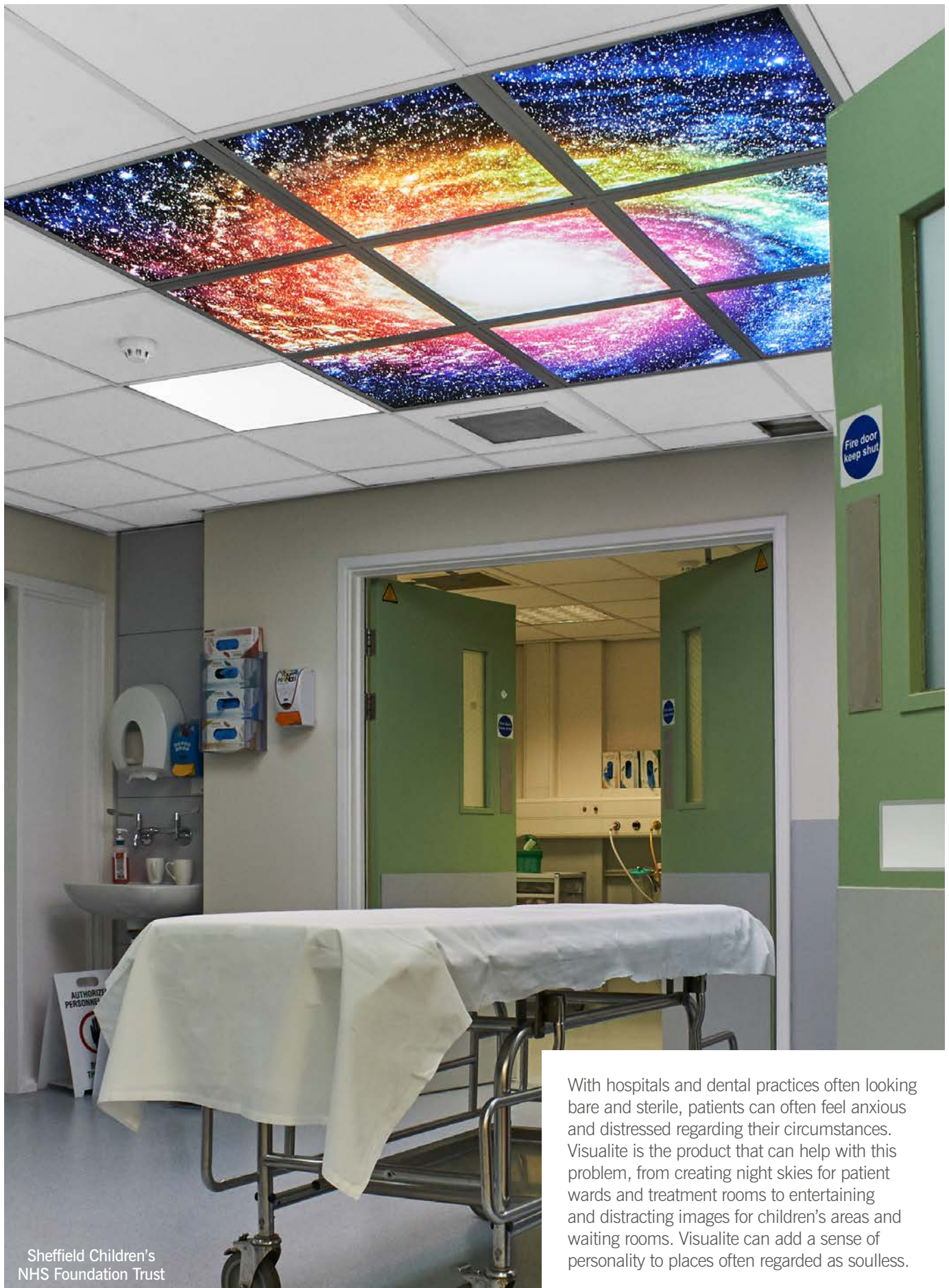


Create a relaxing ambience designed to calm anxiety and enhance the wellbeing of the patient with a magnificent daylight blue sky to open up a space.

MRI facilities with a Visualite Sky Ceiling installed, report reduced instances of claustrophobia and increased efficiency. Our systems also use non-ferrous fittings.

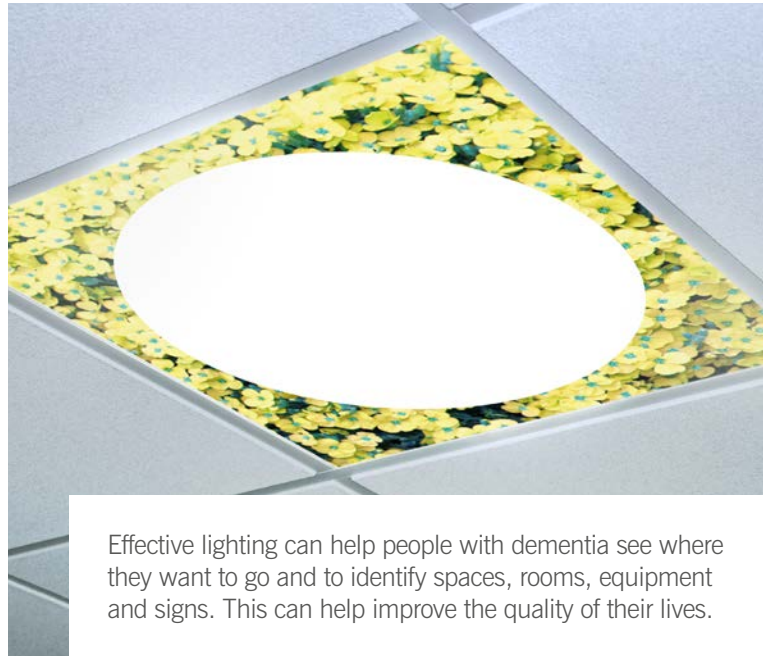






Sheffield Children's
NHS Foundation Trust

With hospitals and dental practices often looking bare and sterile, patients can often feel anxious and distressed regarding their circumstances. Visualite is the product that can help with this problem, from creating night skies for patient wards and treatment rooms to entertaining and distracting images for children's areas and waiting rooms. Visualite can add a sense of personality to places often regarded as soulless.



Effective lighting can help people with dementia see where they want to go and to identify spaces, rooms, equipment and signs. This can help improve the quality of their lives.



Beeches Nursing Home

Animated Distraction Panels with **Visualife^{AR}**




What is Visualife?

Visualife is the link between the physical and digital world that allows people to process both simultaneously.

It is a professional augmented reality (AR) platform that uses patented image recognition software to deliver interactive content to consumers' devices. The software will simply recognise the trigger image and stream content directly to your consumers smart phone or tablet. Everything from viewing and interacting with augmented content happens in real-time on your consumers device.

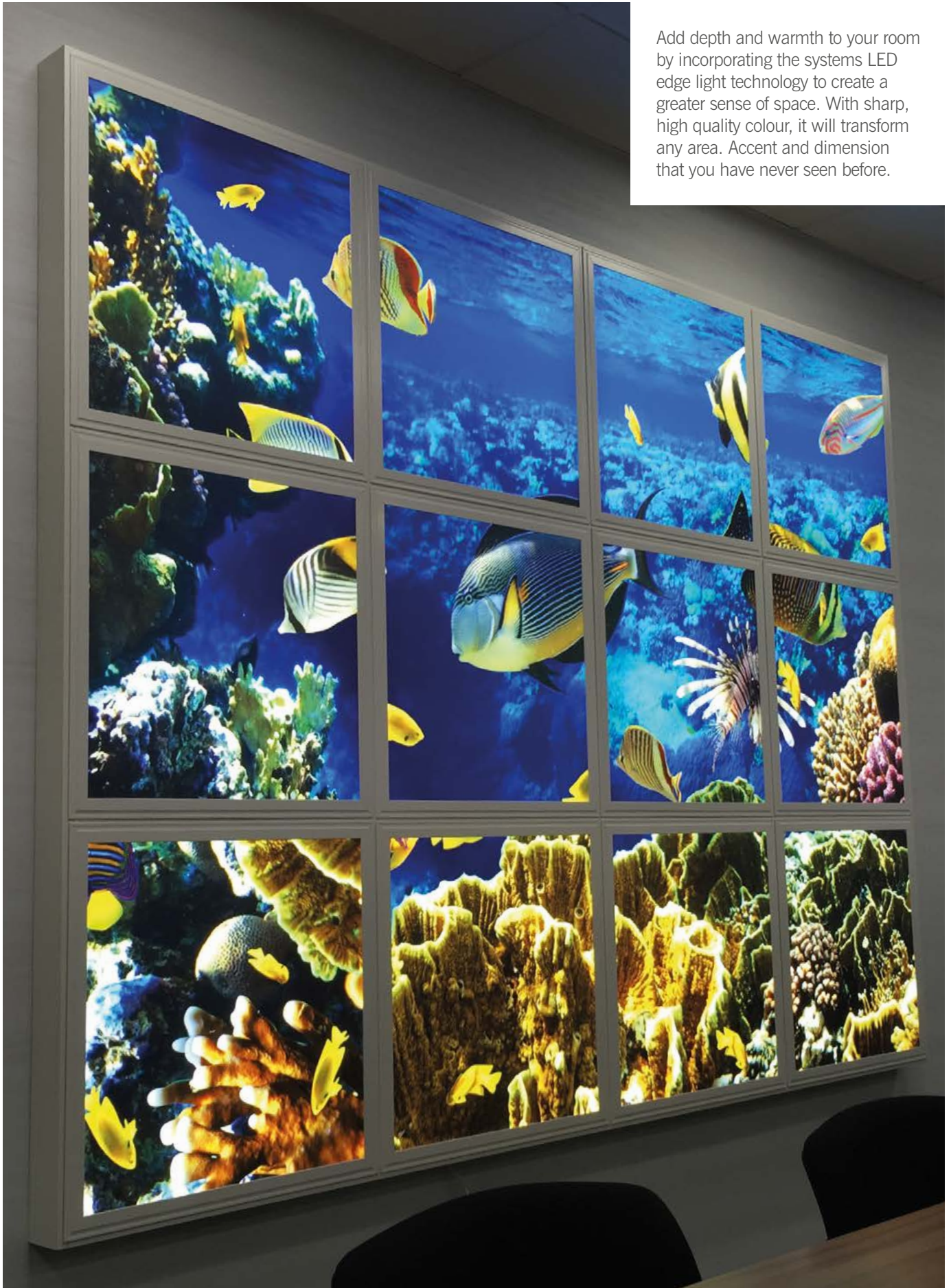
How to use the App

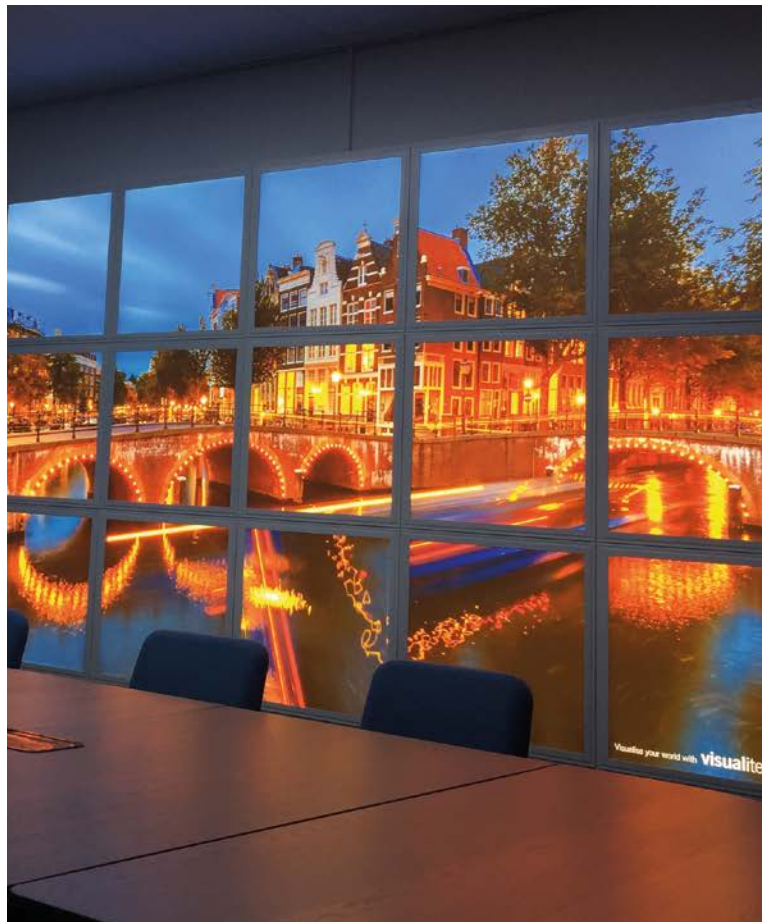


- 1  Download the **FREE** App
Search for Visualife AR on the Apple App Store or Google Play.
- 2  Create a **login**
Signing in will allow your scanned history to be stored for you to revisit.
- 3  Start scanning **Visualife** enabled images
Scan within the crosshairs when you see the Visualife icon and watch the images come alive.



Add depth and warmth to your room by incorporating the systems LED edge light technology to create a greater sense of space. With sharp, high quality colour, it will transform any area. Accent and dimension that you have never seen before.

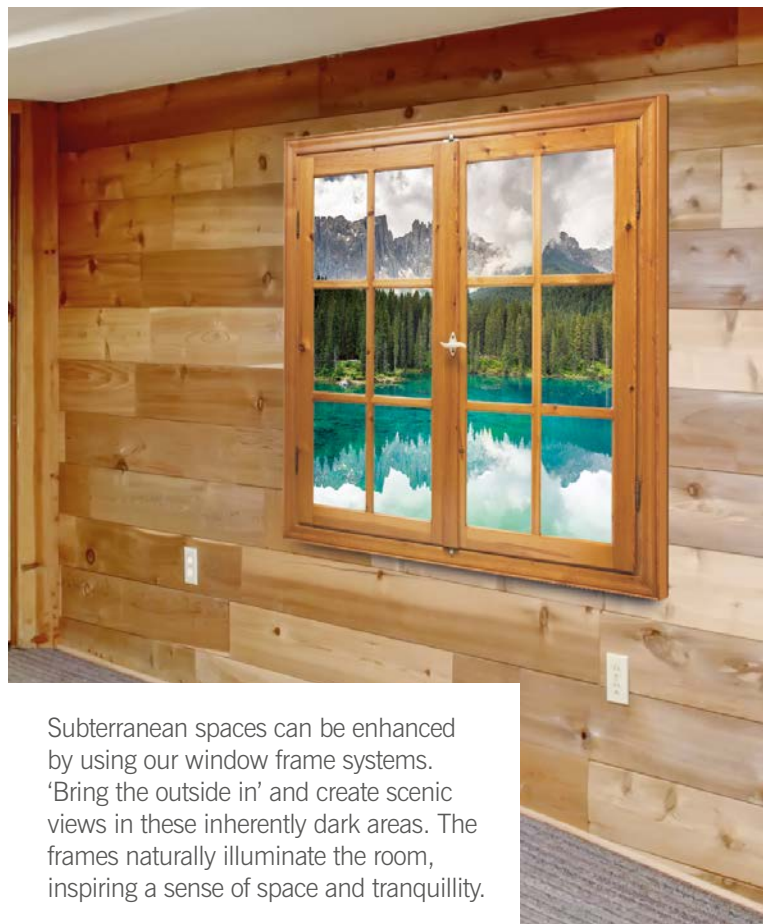




Our frames are available in matt black, white and bronze. The stylishly framed images will enable you to add 'a touch of you', making family pieces into masterpieces. The pictures are truly complemented by our elegant and contemporary frame options, creating images in your home that will redefine a room.



Commercial offices often contain areas of dead space, such as wall breaks to reduce noise. Additionally poor lighting and restricted external views can reduce the efficiency amongst staff. Visualite systems can eradicate this, creating vibrant, energy efficient, well-lit offices, promoting a feel good factor amongst employees.



Subterranean spaces can be enhanced by using our window frame systems. 'Bring the outside in' and create scenic views in these inherently dark areas. The frames naturally illuminate the room, inspiring a sense of space and tranquillity.

Best Food

Locky's

BAR & GRILL

HOUSE SPECIAL

MAPLE FLAVOUR GLAZED HAMMON AND BROS
Main flavour glazed hammon sliced with hot eggs, served with peas and fries

ROSEMARY LAMB SHANK
A tender succulent lamb shank with rosemary, green beans, buttered potatoes and fries

MIXED GRILL
A full mix of the choicest of our signature BBQ meats, with golden fries, mushroom and onion (or Peas)

TBIO PACK OF RIBS
A full rack of ribs marinated in our signature BBQ sauce, with golden fries, mushroom and onion (or Peas)

HAND BATTERED FISH AND CHIPS
Hand-battered fish or cod served with fries, onion sauce and a choice of veg

SALMON & HAGDOCK FRANKIES
Two delicious & traditional frankies. One with smoked salmon, topped with fresh onion and served with fries, garden peas and a choice of veg

BEEF

STEAK & FRIES
A full 2lb sirloin steak, served with fries, mushroom and onion

ICE SMLON STEAK
A full 2lb sirloin steak, served with fries, mushroom and onion

CLASSIC CHEESE
Our classic, hand-battered, with onion, but not a good choice for diet

BLACK AND BLUE
For those that prefer their steaks with onion and green chili

MANHATTAN DOUBLE BURGERS
Two of our steaks, but best served with fries, onion and onion

CHICKEN

NEW JERSEY CHICKEN
Chicken breast topped with melted cheese, served with fries, mushroom and onion

NEW YORK CHICKEN
Chicken breast topped with melted cheese, served with fries, mushroom and onion

HALF ROASTED CHICKEN
A half roast chicken, served with fries, mushroom and onion

GRILLED CHICKEN PITTA
Grilled chicken breast, served with fries, mushroom and onion

DESSERTS

BANOFFEE BAKELT
Baked with a delicious banana and vanilla custard, served with butter sauce and topped with fresh raspberries, served with fresh cream and chocolate sauce, served with a choice of veg

CINNAMON WAFFLE CRUNCH
Our waffle crunch, served with fresh cream and chocolate sauce, served with a choice of veg

SHRIMP & ICE CREAM
Our delicious shrimp and vanilla custard, served with fresh cream and chocolate sauce, served with a choice of veg

PROSECCO
Prosecco that is available throughout the year

CHOCOLATE FUDGE CAKE
Served with fresh cream and chocolate sauce, served with a choice of veg

BEVERAGES

Full menu available inside

SALADS

BROOKLYN BEEF SALAD
Served with fresh beef, tomato, onion, cucumber, and fries, served with fresh cream and chocolate sauce, served with a choice of veg

GOAT'S CHEESE SALAD
Served with fresh goat cheese, tomato, onion, cucumber, and fries, served with fresh cream and chocolate sauce, served with a choice of veg

CLASSIC CAESAR
Served with fresh chicken, tomato, onion, cucumber, and fries, served with fresh cream and chocolate sauce, served with a choice of veg

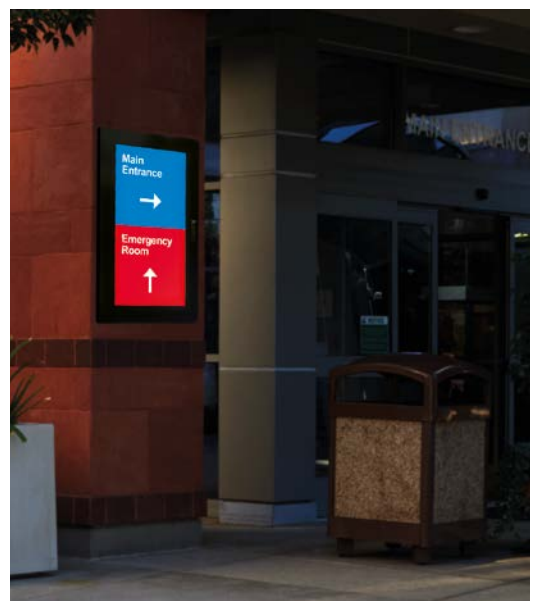
BLACKENED SALMON WITZEA
Served with fresh salmon, tomato, onion, cucumber, and fries, served with fresh cream and chocolate sauce, served with a choice of veg

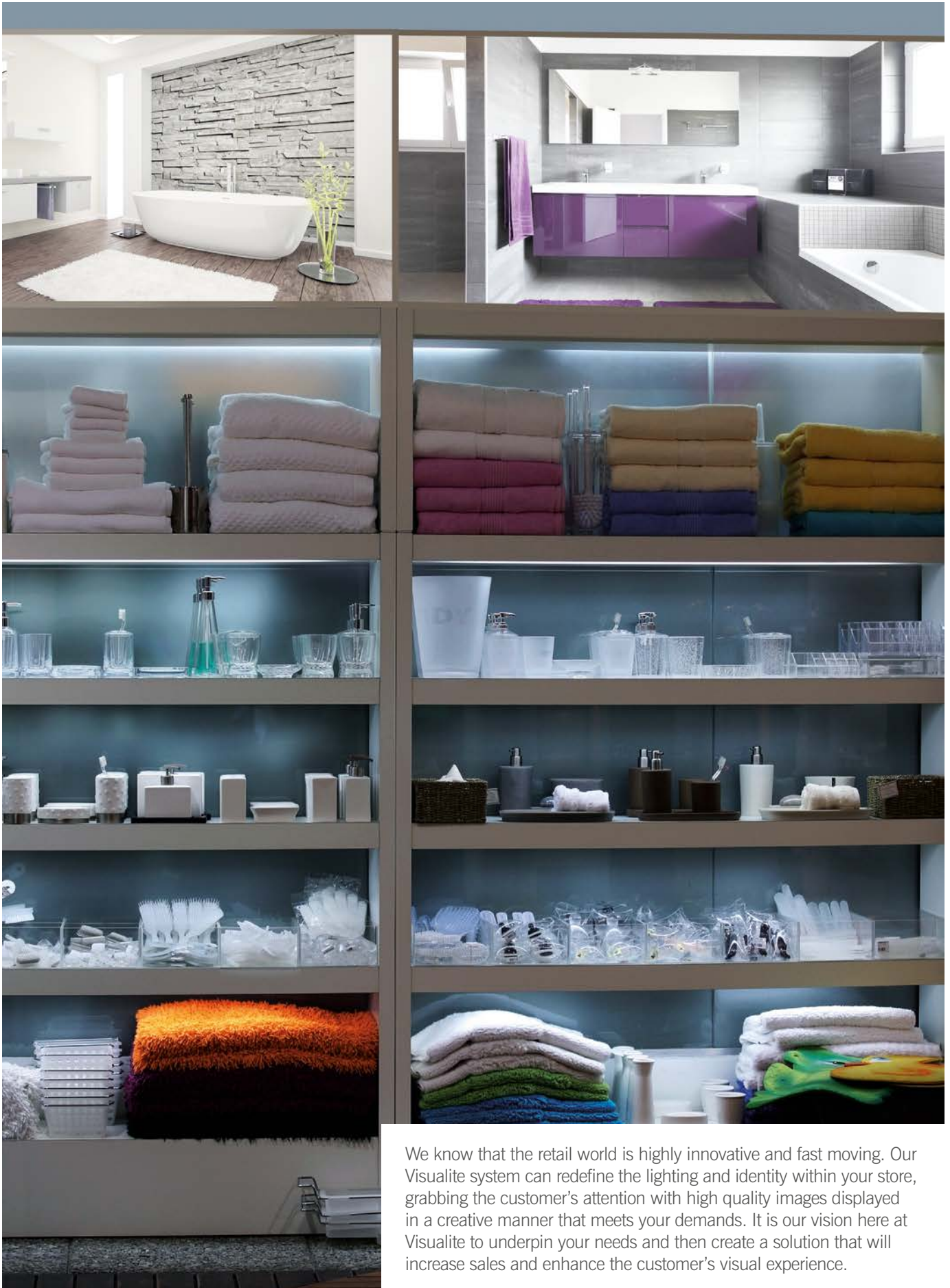
MAPOLI
Served with fresh chicken, tomato, onion, cucumber, and fries, served with fresh cream and chocolate sauce, served with a choice of veg

ASIC SALAD
Served with fresh chicken, tomato, onion, cucumber, and fries, served with fresh cream and chocolate sauce, served with a choice of veg

LUNCH TIME MENU SERVED FROM MIDDAY

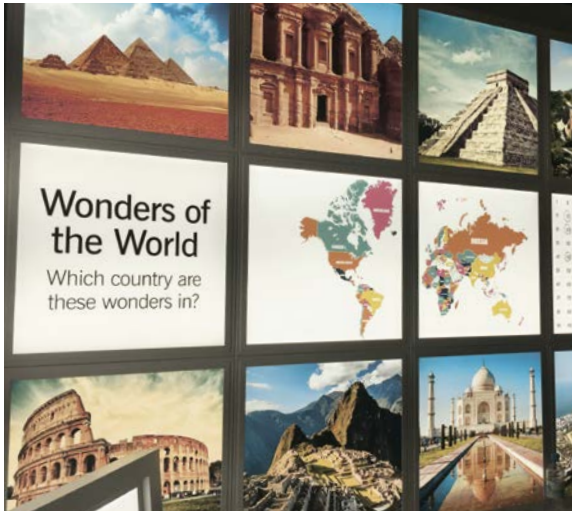
OPENING TIMES
SUN - THURS: 11:00 - 23:00 | FRI - SAT: 11:00 - 23:00





We know that the retail world is highly innovative and fast moving. Our Visualite system can redefine the lighting and identity within your store, grabbing the customer's attention with high quality images displayed in a creative manner that meets your demands. It is our vision here at Visualite to underpin your needs and then create a solution that will increase sales and enhance the customer's visual experience.





Visualite can be a catalyst in igniting our children's imagination, opening their minds to incredible learning experiences. From ceiling lighting arrays displaying the universe, to wipeable illuminated screens, which the children can write on, helping to maintain their engagement.

Circular Panels

Add a fun element to any interior, with Visualite's new range of circular lighting panels. From cartoon faces to striking detailed images of planets, these compact lights come in various sizes and can be customised to your heart's content with quirky imagery to suit.

Sizes (diameter) and wattages available:

172mm - 12W

225mm - 18W

300mm - 24W



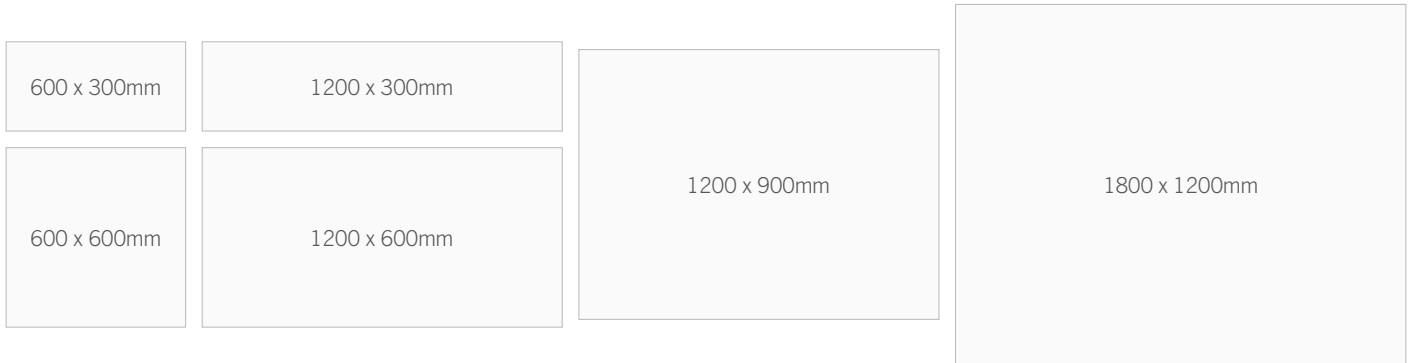
Technical Specifications

The Visualite System

- Suitable for 25mm and 15mm T-bar ceiling installations
- Suitable for wall mounted installations using our bespoke modular frame system
- LED lighting technology
- Operating lifetime (hours): 50,000
- Excellent colour rendering index for colour resolution and stability (RA)>80
- 6000k colour temperature
- Flexible light output capability using our dimmable driver solutions

Modular cell dimensions

(Bespoke sizes also available on request)

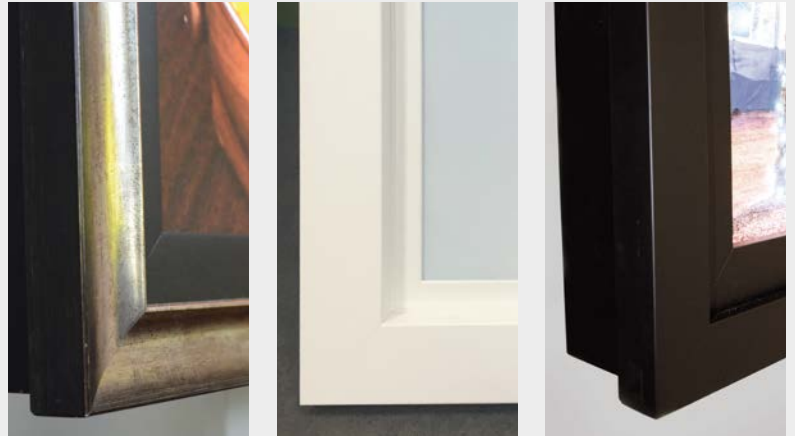


Frame Finishes

We currently offer three standard finishes:

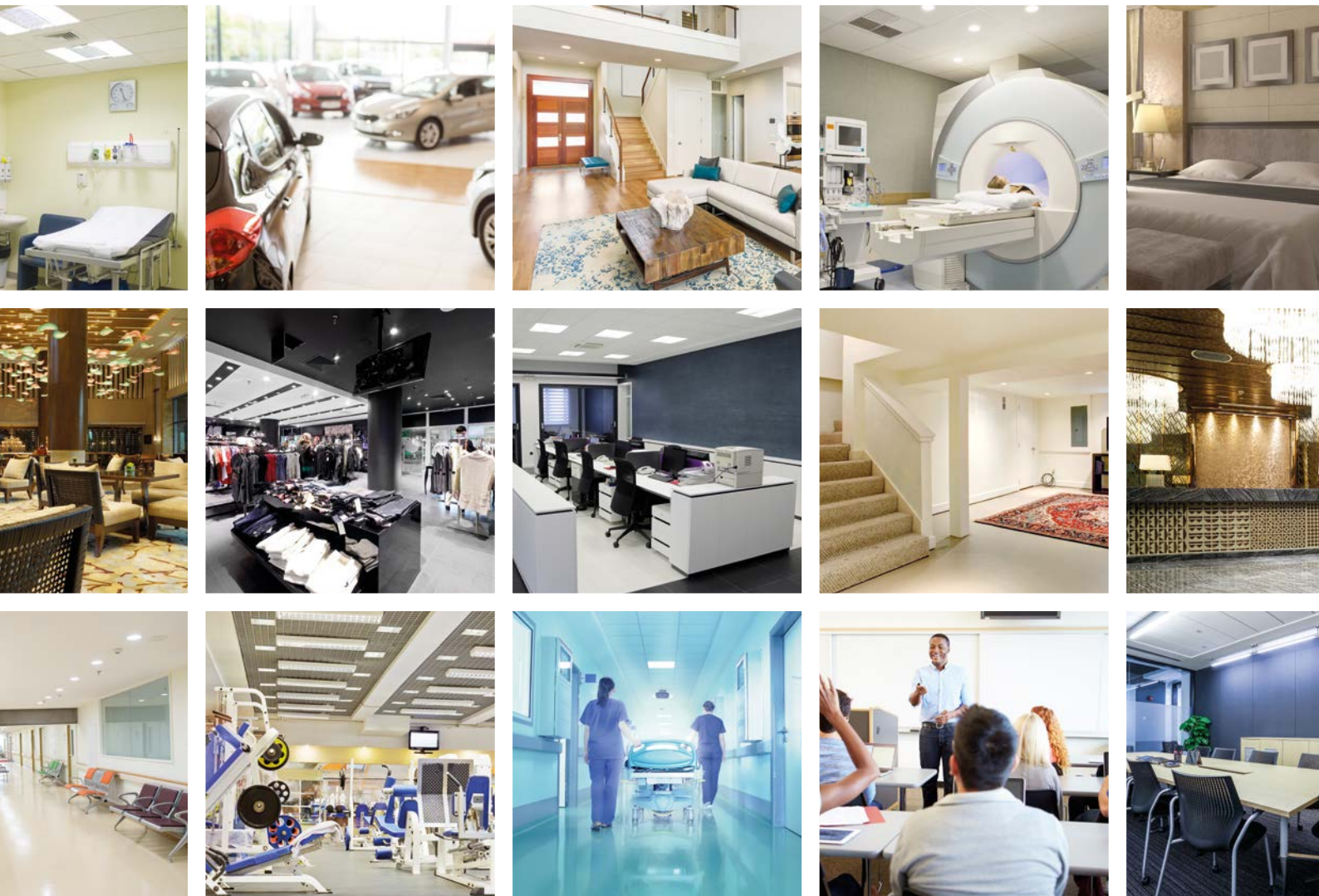
- Silver bronze with black insert
- Matt white
- Matt black

Each finish is ideal for settling into any environment



Bespoke finishes are also available on request






visualite

The only limit is your **imagination**

Available **exclusively** at



your-visualite.co.uk
 0844 880 3656*
  hello@your-visualite.co.uk
 @hellovisualite

*Calls to 0844 numbers will be charged at 7p per minute from a Standard BT Line, calls from mobiles and other networks may vary.