

# visualite

Visualise your world



Clinical Lighting Solutions



# Introduction

## What is Visualite?

...Simply revolutionary. Powered by spectacular edge light technology and supplied with a vast array of stunning visuals, our new range of Visualite systems create an amazing lighting effect and ambience, incorporating the light source and bespoke image into one.

As well as choosing from any of our beautiful high definition images we can also incorporate your own images and artwork to provide the personalised product which you desire. Feel the warm embrace of daylight shining down from the ceiling with the magnificent blue-sky scene, or gaze across iconic landscapes no matter where you are. Years of continuous development now enable us to be ahead of the game, providing exciting simulations fit for any scenario.

The Visualite system can provide a pleasant and powerful impact in any of these environments:

- Hospitals and other medical environments
- Retail and leisure
- Car showrooms
- Commercial offices
- Education
- Sport stadiums
- Basements
- Boardrooms
- Homes

The list is endless, the only limit is your imagination.

## What makes Visualite unique?

- Unlike anything on the market, the quality of printing on our products is exceptional. Using the VTEC system, we process in the full colour spectrum, rendering a superb image, with no compromise on the quality
- Non-ferrous Visualite systems available for medical environments
- Built with a tough outer protective coating, the Visualite system offers a fully wipeable surface for ease of maintenance and product longevity
- Personalised service: Our dedicated design team will assist you in selecting your image

# The Rotherham

NHS Foundation Trust



“ Promoting wellbeing and fostering a healing environment is not only about the care and treatment our patients receive. It also incorporates looking at and improving the environment in which care is to be delivered.

Here at Rotherham Hospital we are committed to the use of artwork in our hospital. However we have many areas now that would benefit from an improved facility for our patients, not only adults but also children or young people.

A healing environment prompts a feeling of wellbeing; it provides a welcoming and stimulating environment, often in busy waiting areas where patients may be feeling anxious about blood tests, or other investigations. Such enhanced environments create a positive ambience,

## Helen Green

Head of Nursing – Operations, The Rotherham NHS Foundation Trust

which are vibrant and stimulating light and comfortable. Enhancing any environment is not only about bricks and mortar changes, it's about the use of colour, light and texture, the possibilities are endless and we can really make a difference together.

We had four Visualite tiles on trial in the CT scan department. This is a very busy area where patients have routine and emergency body or brain scans. Often the patients, again some children and adults are often frightened and need some reassurance that we understand their fears. The tiles picture is blue sky with beautiful clouds that one could get lost within, promoting a relaxing mood.

We saw the huge benefit in the Visualite panels and we asked for a charitable bid to be considered. We were very fortunate to have received £20,000 and the rest is history, they are making such a positive impact.

”



Create a relaxing ambience designed to calm anxiety and enhance the wellbeing of the patient with a magnificent daylight blue sky to open up a space.

MRI facilities with a Visualite Sky Ceiling installed, report reduced instances of claustrophobia and increased efficiency. Our systems also use non-ferrous fittings.



University Hospital  
Southampton NHS  
Foundation Trust



Rotherham NHS  
Foundation Trust



Static Systems  
Group Design and  
Innovation Centre





Sheffield Children's  
NHS Foundation Trust

With hospitals and dental practices often looking bare and sterile, patients can often feel anxious and distressed regarding their circumstances. Visualite is the product that can help with this problem, from creating night skies for patient wards and treatment rooms to entertaining and distracting images for children's areas and waiting rooms. Visualite can add a sense of personality to places often regarded as soulless.



Visualite can be a catalyst in igniting our children's imagination, opening their minds to incredible learning experiences. From ceiling lighting arrays displaying the universe, to wipeable illuminated screens, which the children can write on, helping to maintain their engagement.

Rebecca House,  
Children's Hospice,  
Isle of Man





Effective lighting can help people with dementia see where they want to go and to identify spaces, rooms, equipment and signs. This can help improve the quality of their lives.

“ Coming into hospital can be distressing for anyone but more so if the person is living with dementia and is also unwell requiring hospital admission. Such people may become disorientated leading to personal distress.

We asked Visualite to design us something bespoke that we could add into our ceiling tiles, so it complemented our bed bays feature wall and assisted way finding. These bespoke tiles are calming, easily identifiable and accentuate the colours perfectly. Enhancing and embracing way finding for our patients, our relatives and our team ”

**Helen Green**

Head of Nursing – Operations  
The Rotherham NHS Foundation Trust



Beeches Nursing Home

# Barnsley Hospital Case Study



## Question

### Strongly Agree / Agree

### Strongly Disagree / Disagree

The visual lighting display makes the area feel more welcoming

85%

0%

The visual lighting display improves the mood of the environment

75%

2%

The visual lighting display helped me to relax prior to my surgery

63.5%

7.5%

The visual lighting display helped me to remain calm whilst waiting for my surgery

58.5%

9.5%

The visual lighting display improved my recovery period

50%

3%

The visual lighting display made the environment more pleasant and relaxing

83%

0%

## Patient Feedback

“Looks very bright and wonderful, makes the room feel calm and more home like, relaxed and natural and more natural to look at”

“I think it looks really good and attractive. Bright without being glaring”

“Looks really calming and serene”

“Really tranquil”

“It was the first thing that I noticed when I arrived”

“Very effective and lovely to look at”

“The visual lighting is very pleasant to look at and makes the area appear less clinical”

“Good effective lighting, improved my mood”

“Think they are a wonderful idea. First thing I noticed”

“Lights did make area more restful”

“I thought it made the room look bright and cheerful”

## Andrea Squires, Service Development Manager, The Barnsley NHS Foundation Trust

Visualite installed two sky scenes to allow us to pilot the product in the Day Surgery waiting area and discharge area at Barnsley Hospital, and feedback was collected from patients accessing the service. The feedback was overwhelmingly positive, and identified the following benefits:

- Made the area feel more welcoming
- Improved the mood of the environment
- Helped patients to relax prior to their surgery
- Helped patients to remain calm whilst waiting for their surgery
- Improved patients recovery period
- Made the environment more pleasant and relaxing

The Trust is now hoping to secure funding to install the panels throughout Day Surgery, Theatre anaesthetic rooms and Children's waiting areas.

# Rotherham Hospital Case Study



## Question

Did Visualite brighten up the clinical area?

**Strongly Agree / Agree**

100%

**Strongly Disagree / Disagree**

0%

Did Visualite generate a sense of calming?

95%

5%

Did Visualite distract you during your procedure?

59%

41%

Did Visualite enhance the patient experience and improve the healing environment?

80%

20%

## Patient Feedback

“It makes it much more relaxing and bright”

“It’s lovely and feels less enclosed”

“They make the waiting room look more cared for and more modern”

“Very calm and relaxing”

“Like the concept, perhaps beach or countryside may uplift people too”

“It makes me feel happy to see the sky when having my braces changed”

“Very calm and relaxing”

## Staff Feedback

“These are lovely feature and the kids love them”

“They have brightened up the clinic and often hear children and parents comment positively about the lights”

“Light displays have had a positive effect within the waiting area”

“Patients are really impressed with the new ceiling lights, I think it really improves the look of the rooms”

# Circular Panels

Add a fun element to any interior, with Visualite's new range of circular lighting panels. From cartoon faces to striking detailed images of planets, these compact lights come in various sizes and can be customised to your heart's content with quirky imagery to suit.

Sizes (diameter) and wattages available:

172mm - 12W

225mm - 18W

300mm - 24W



# Animated Distraction Panels with **Visualife<sup>AR</sup>**




## What is Visualife?

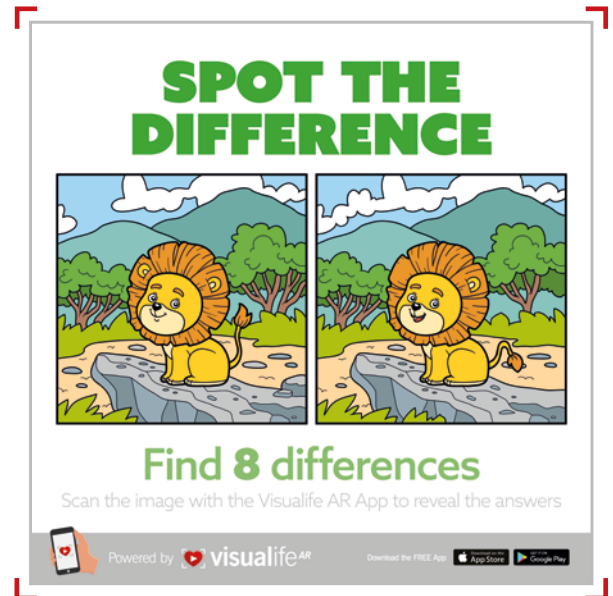
Visualife is the link between the physical and digital world that allows people to process both simultaneously.

It is a professional augmented reality (AR) platform that uses patented image recognition software to deliver interactive content to consumers' devices. The software will simply recognise the trigger image and stream content directly to your consumers smart phone or tablet. Everything from viewing and interacting with augmented content happens in real-time on your consumers device.

## How to use the App



- 1  Download the **FREE** App  
Search for Visualife AR on the Apple App Store or Google Play.
- 2  Create a **login**  
Signing in will allow your scanned history to be stored for you to revisit.
- 3  Start scanning **Visualife** enabled images  
Scan within the crosshairs when you see the Visualife icon and watch the images come alive.



# Frame Finishes

We currently offer three standard finishes:

- Silver bronze with black insert
- Matt white
- Matt black

Each finish is ideal for settling into any environment



Bespoke finishes are also available on request



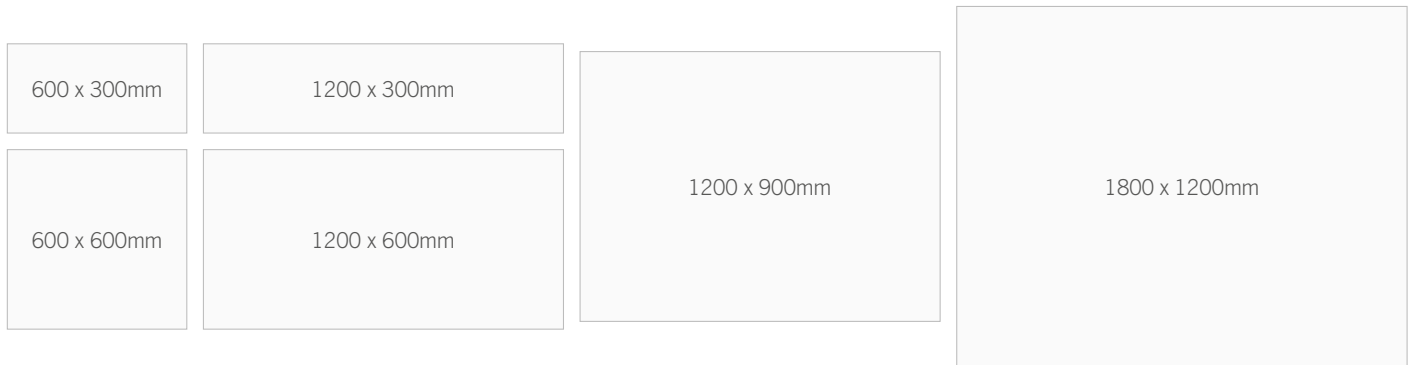
# Technical Specifications

## The Visualite System

- Suitable for 25mm and 15mm T-bar ceiling installations
- Suitable for wall mounted installations using our bespoke modular frame system
- LED lighting technology
- Operating lifetime (hours): 50,000
- Excellent colour rendering index for colour resolution and stability (RA)>80
- 6000k colour temperature
- Flexible light output capability using our dimmable driver solutions

## Modular cell dimensions

(Bespoke sizes also available on request)



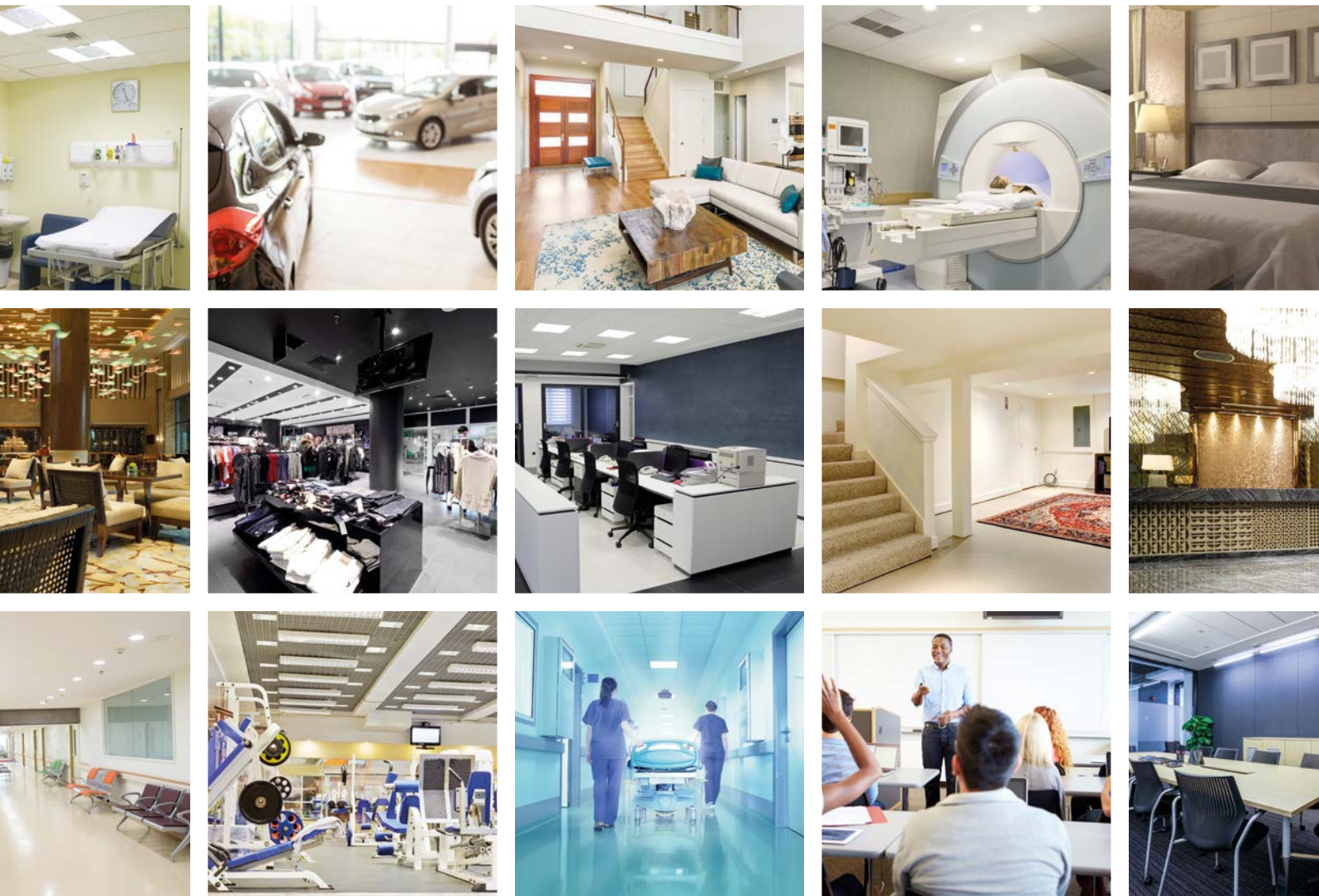
# VTEC Lens Cleaning

The cleaning agents carried out in trials for the VTEC lens in a clinical environment are as follows:

- Haz Tab (tablet) one per litre
- So Chlor (tablet) one per litre
- Suma Bac D10 (liquid) 10 - 15ml per litre of water
- Household Bleach (liquid) Neat

The test carried out was applied as per instruction and also as a flood coat as a secondary test, exposure time 6 hours with no damage or impact to the Visualite VTEC lens.

If other cleaning solutions are applied in a clinical environment Visualite is happy to carry out testing on the VTEC lens prior to a project going live.



# visualite

The only limit is your **imagination**

Available **exclusively** at



[your-visualite.co.uk](http://your-visualite.co.uk)  0844 880 3656\*  [hello@your-visualite.co.uk](mailto:hello@your-visualite.co.uk)  @hellovisualite

\*Calls to 0844 numbers will be charged at 7p per minute from a Standard BT Line, calls from mobiles and other networks may vary.